

BIWAC

Make BIWAC „The Eye“ of your BI-Systems – keep track of your SAP-BW

Is this situation familiar to you:

Users complain, that important data in the BI-System are unavailable, although it seems all data load requests are running „green“. Important members of the IT-Team must invest their time in searching for errors.

Experts know:

The standard SAP methods of monitoring are insufficient! Datamodels are static only in presentation slides, however it's data staging is dynamical. This dynamic monitors BIWAC for you fully automated.

Allowing BIWAC to work for you means:

- + Time and money saved by fully automated monitoring processes
- + Improvement and quality assurance in your Business Reporting
- + Optimization of hardware usage and data-loading using system scans

Increased trust in your BI-System and therefore increased economical usage.

Allow BIWAC to do the work for you!

E-Mail dispatch: The attractive graphical presentation of your status-report is automatically dispatched as Background Mail.

You decide what and when to monitor. BIWAC delivers you a substantial status report.

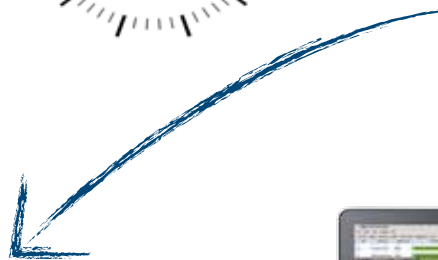
The results are presented quite simply as traffic lights (red, yellow, green). You form your own

status report: either summarized for management or with technical details for the support team to correct errors, or inform the user. An intuitive presentation of statistic data is additionally included.

The installation is done within a few minutes; BIWAC is then ready for first analyses. Setting up the mail-service and the automatic

monitoring depends on your requirements. We support you with this.

powerfull status reports, scalable for all devices



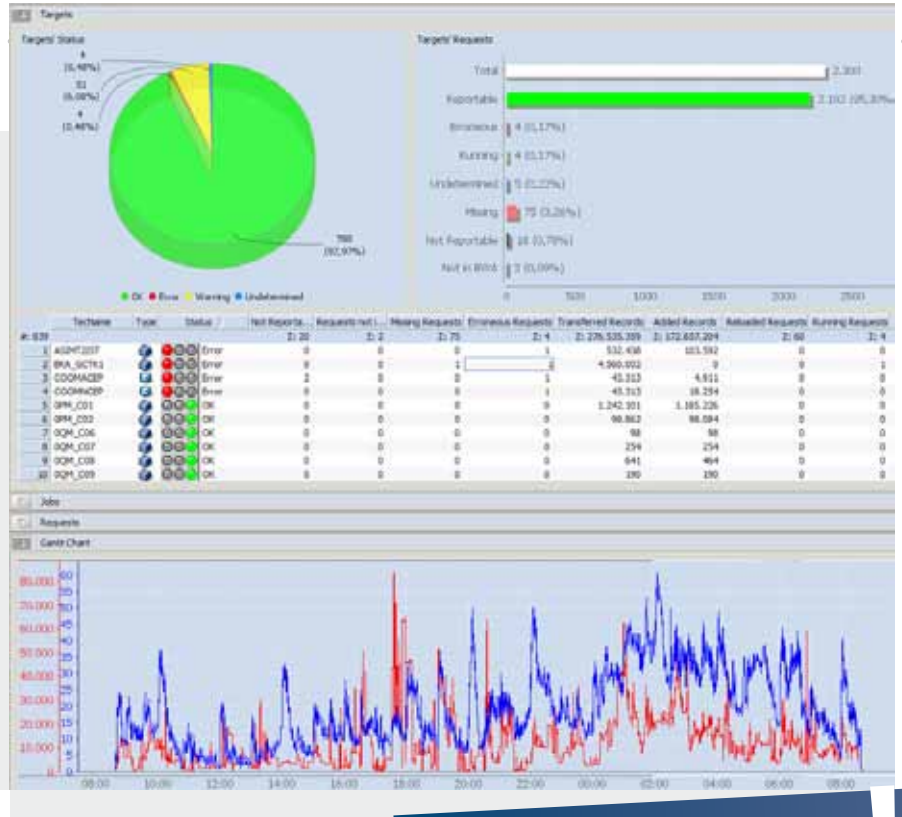
Scheduled BIWAC



BIWAC

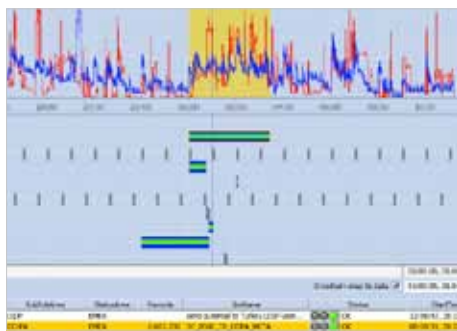
BIWAC provides:

- + Safety at dataloading
- + An overview of all dataload information
- + A reduction of routine jobs to an absolute minimum
- + Quality improvement by diminishing manual monitoring errors
- + Quick Status of all reporting relevant Info-Provider, Aggregate und BWA
- + Statistic data to perfectionize scheduling and optimize hardware usage



ORDER OUR FREE TEST LICENSE TODAY

BIWAC checks:



Have all the loading sequences occurred (Jobs, PCs, IPGs):

- + At the correct time?
- + In the correct order?

| Jobname | Description | Loadseq. Number | Startzeit | Endzeit | Status | Message |
|-----------|-------------|-----------------|-----------|---------|--------|---------|
| ALMST20T | ALMST20T | 000 | 000 | 000 | OK | OK |
| BWA_SCT13 | BWA_SCT13 | 000 | 000 | 000 | Error | Error |
| COOMACEP | COOMACEP | 000 | 000 | 000 | Error | Error |
| SPM_CO1 | SPM_CO1 | 000 | 000 | 000 | OK | OK |
| SPM_CO2 | SPM_CO2 | 000 | 000 | 000 | OK | OK |
| QPM_CO6 | QPM_CO6 | 000 | 000 | 000 | OK | OK |
| QPM_CO7 | QPM_CO7 | 000 | 000 | 000 | OK | OK |
| QPM_CO8 | QPM_CO8 | 000 | 000 | 000 | OK | OK |
| QPM_CO9 | QPM_CO9 | 000 | 000 | 000 | OK | OK |

Are all the necessary reporting dataloads at your disposal and what status do they have:

- + Are all essential dataloads correctly booked?
- + Which DTP/InfoPackage-Requests still fail?
- + How many data records were continued?
- + Are the requests in DSO-Objects activated?